

## Spectrum Oil Filtration Trolleys



**Mobile Filtration Carts**

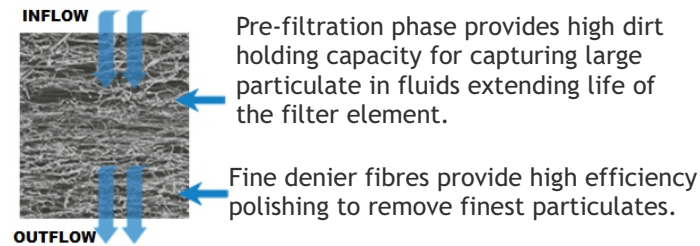
Mobile filtration carts are small, compact, light weight, easy to carry units for removing contaminants from the lubricants.

Spectrum Mobile Oil Filtration Carts incorporate SmartFlow Media Technology & Filter Elements from Todd Technologies Inc., (TTI) USA.

This involves Dual Phase Microglass Media which offers unparallel filtration in hard-to-solve applications as depicted in the following graphic...

### Dual Phase Filtration Media

Delivers superior filtration efficiency and dirt holding capacity with low pressure drop.



Microglass media are tested according to ISO 16889 (multi-pass test). Valid up to 50 psi differential pressure.

They offer unique advantages over conventional filter media such as -

- Beta 1000 efficiencies in 1µm, 3µm, 6µm, 10µm and 25µm microns
- Graded density creates a “built-in” pre-filter layer for every cartridge
- Reduced pressure drop and increased dirt holding capacity over conventional Single Phase materials

### Oil Filtration Services

Large plants can afford to buy Mobile filtration carts since they need to filter lubricants too frequently.

However, for small and medium size enterprises we offer filtration services at reasonable charges.

Advantages for you are that -

- ☐ No need to invest
- ☐ No repairs / maintenance
- ☐ No need for manpower
- ☐ Our expertise helps you

## Spectrum Hydraulic Oil Flushing Unit



**Hydraulic Oil Flushing Unit**

Over the time, hydraulic systems can accumulate contaminants like dirt, metal particles, and degraded oil residues that can lead to inefficiencies, system failures, or costly repairs.

Our flushing unit circulates high-velocity oil through the hydraulic system to dislodge and remove contaminants, ensuring optimal performance and longevity of equipment.

The process typically involves filtering the oil while it is being flushed through the system, effectively cleaning the internal components without any need for disassembly.

It not only saves time but also potential for system downtime.

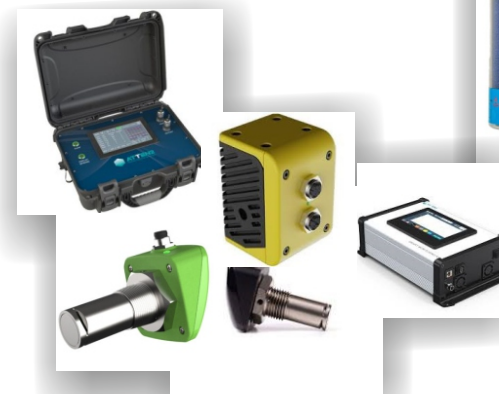
Hydraulic Oil Flushing Units are vital for industries where hydraulic systems are crucial, such as manufacturing, marine, aerospace, and heavy machinery.

1. Superior Contaminant Removal: Designed to efficiently remove even the most stubborn contaminants from your hydraulic system, ensuring smoothly and reliable operation.
2. Minimized Downtime: With high-velocity oil circulation and advanced filtration technology, our unit minimizes the need for prolonged system shutdowns, quicker maintenance and reduced operational interruptions.
3. Enhanced Equipment Lifespan: Effective cleaning and maintaining the hydraulic system extends lifespan of your equipment, protecting your investment and reducing long-term maintenance costs.
4. Easy Integration & Operation: The unit is user-friendly and can be easily integrated into existing hydraulic systems. Its intuitive controls allow for quick setup and operation, an ideal choice for maintenance teams.
5. Customizable Solutions: We offer customizable flushing units tailored to meet the specific needs of your hydraulic systems, like higher pressure, filtration options, or unique configurations.

This unit is indispensable for anyone looking to maintain the integrity and performance of their hydraulic systems, making it a must-have tool for industries relying on heavy-duty hydraulic equipment.

This unit is indispensable for anyone looking to maintain the integrity and performance of their hydraulic systems, making it a must-have tool for industries relying on heavy-duty hydraulic equipment.

# SPECTRUM OF PRODUCTS



**SPECTRUM**  
Engineers

B7/602, Kunal Icon, Pimple Saudagar, Pune - 411027. Maharashtra, India.

+91-8308801225  
sales@spectrumengineers@gmail.com  
www.spectrumengineers.co.in



## GRUETZNER Automatic Lubricators



G|Lube G|Lube-Oil G|Lube-S G|Lube-VIB Lubricus Sololube

Gruetzner Automatic Lubrication Systems dispense small, precise amounts of lubricant at short, regular intervals.

For compact machines, for those located in hazardous areas and in large plants, manual lubrication is often difficult, time consuming, dangerous and expensive.

Uneven under/over lubrication results in frequent breakdowns of machines.

Our Automatic Lubricators -

- Ø optimise consumption of lubricant
- Ø reduce risk of contamination
- Ø reduce instances of breakdowns
- Ø ensure safety of personnel.

We have a wide range to suit your specific needs. Apply criteria to select a the most suitable model for your machines.

- Ø Single use or Refillable
- Ø Electrochemical or Electromechanical
- Ø Oil or Grease
- Ø Space constraint
- Ø Vibration level of machines
- Ø Quantity of lubricant
- Ø Frequency of lubrication
- Ø Operating temperatures...

Our representative will be pleased to assist you in selecting appropriate model.

In addition, we also have accessories that will help in installation and operation of lubricators. Here they are...



Brackets Batteries Hoses & Connectors Distributors

## TTI Breathers



PowerBreather PowerBreather-CV Titan TitanBlock Rebuildable

PowerBreather™ is a marked improvement over the customary dust caps or OEM breathers on equipment.

When contaminated air enters the top of the breather, it passes through DuoGlass™ filter media, preventing solid particles from entering the breather and causing undue wear to your equipment surfaces.

Filtered air passes through a bed of silica gel, which removes harmful moisture from the air. The silica beads also attract moisture from inside the equipment reservoir during service or shut-down, keeping the equipment dry. This extends service cycles and equipment life.

Todd Technologies Inc. have developed patented designs for superior air breathing and filtration.

- Ø DuroGlass™ filter media removes the finest particulate.
- Ø Fine denier fibers provide high filter-efficiency of the size of 1 micron.
- Ø 3-5 Micron particulate capture layer prefiltration dual phase Microglass layer provides high-capacity capture of bulk airborne particulate.

We have models for your applications. Consider these criteria while selecting appropriate model for your application.

- Ø High Flow or low flow
- Ø Continuous operation or intermittent
- Ø Dry ambient conditions or humid
- Ø Dusty environment or clean

Our representative will be pleased to assist you in selecting appropriate model.

In addition, we also have adopters for specific applications. Here they are...



Gearbox Adaptor Drum Adaptor Hydraulic Adaptor

## Atten[2] Sensors



OilHealth OilMoisture OilWear OilCMS SMK

The most common method of detecting the degradation of a machine is its periodic inspection. The evidence is observed after it occurs.

This degradation has co-relation with extent of lubrication and condition of lubricants. Our Advanced technology sensors identify trends and make it possible to take action ahead of a possible failure. This prevents halting of the process unexpectedly.

The degradation of critical machinery comes with high financial costs. Not only the replacement of the worn out parts but also the down time - planned or unplanned.

Our sensors analyse the pattern of condition of lubricant, extent of particulate and moisture. Importantly, sensors transmit real time data to control system. It helps you take corrective action at right time.

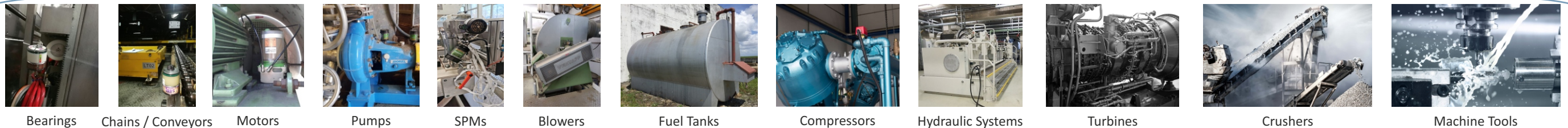
The sensors employ optical technology and apply advanced image digitalisation and spectral analysis processes to monitor the condition of critical machines using fluid quality and status analysis.

They have capacity of self-diagnosis. They use advanced algorithms to process, recognise and correlate images.

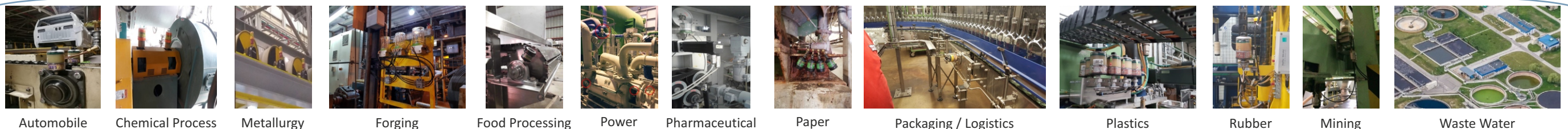
Besides sensors we also offer portable Oil Condition Monitoring System. OilCMS provides a detailed view of particles, serving to eliminate air bubbles and recognise their shape.

In addition, Smart Monitoring Kit (SMK) is a plug&play integration kit combining OilWear with HMI display to present relevant information alongside the machine itself. Besides viewing data, it can store it and export via USB. It can likewise be connected remotely to control system for monitoring status of your assets.

**The thrust is on prevention rather than correction !!**



Bearings Chains / Conveyors Motors Pumps SPMs Blowers Fuel Tanks Compressors Hydraulic Systems Turbines Crushers Machine Tools



Automobile Chemical Process Metallurgy Forging Food Processing Power Pharmaceutical Paper Packaging / Logistics Plastics Rubber Mining Waste Water